



## GENERAL SPECIFICATION

MODEL

BSI - 10 Series

### 1. Electrical Characteristics.

- 1-1. Rating : AC, DC 12V 0.5A~24V 0.3A (Minimum current: 1mA)
- 1-2. Contact Resistance : Max 30mΩ
- 1-3. Insulation Resistance : Min 10,000MΩ, at DC 500V
- 1-4. Withstanding Voltage : 1min at AC 500V

### 2. Mechanical Characteristics.

- 2-1. Operating Force : 250gf ±150gf
- 2-2. Angle of Lever Throw
- 2-3. Insulator
  - 2-3-1. Case : Glass Fiber Reinforce Polyamide (UL94 V-0)
  - 2-3-2. Slide : Glass Fiber Reinforce Polyamide (UL94 V-0)
- 2-4. Terminal : Nickel(Ni 0.2μm Min) Gold Plate(Au 0.05μm Min)

### 3. Life Test.

- 3-1. Test Condition : Operations at a rate of 15-20Cycle 1minute
  - 3-1-1. with load : 2,000 Cycles
  - 3-1-2. without load : 50,000 Cycles
- 3-2. Operating Force : With +10%, -40% of Initial Value
- 3-3. Contact Resistance : Max 30mΩ

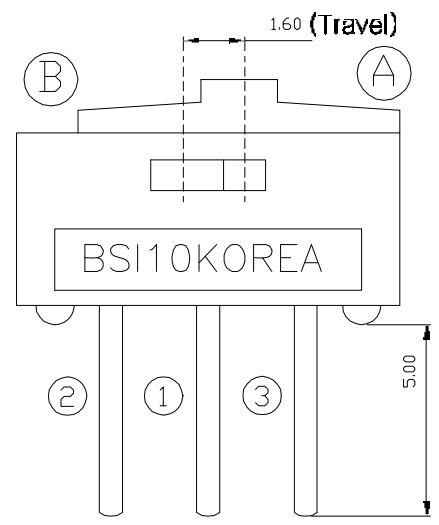
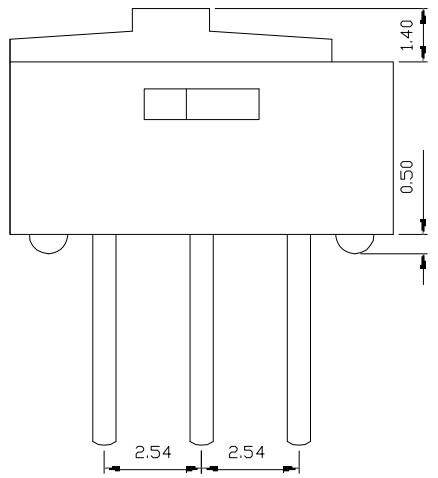
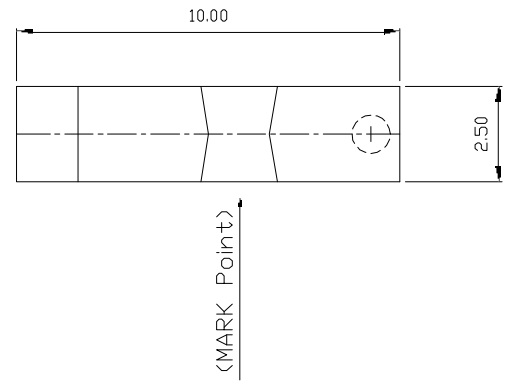
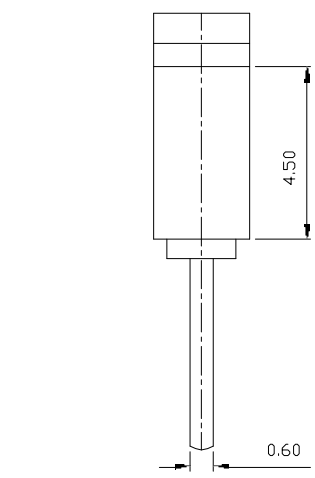
### 4. Environmental Characteristics.

- 4-1. Operating Temperature : -40℃ to +85℃
- 4-2. Storage Temperature : -40℃ to +85℃
- 4-3. Humidity Test
  - 4-3-1. Test Conditions : Measured 1Hour After Exposure to Ambient  
After 96Hour Exposure at 40±2℃, 90-95%R.H
  - 4-3-2. Insulation Resistance : Min 10,000MΩ, at DC 500V
  - 4-3-3. Withstanding Voltage : 1min at AC 500V
- 4-4. Saline Spray Test : 24 hours

### 5. Solder Conditions.

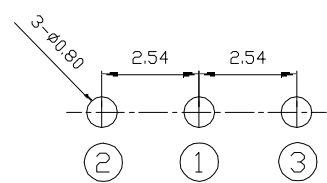
- 5-1. Hand solder: 3~4sec. at 380℃
- 5-2. Wave solder: 5sec. at 270℃

MARK	DATE	REMARKS
△		
△		

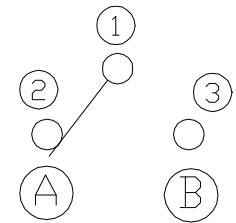


### SPECIFICATION

1. Rating : 0.5A, DC 12V~0.3A, DC24V
2. Contact Resistance : 30mΩMax
3. Travel : 1.6mm
4. Operating Force : 800gf Max
5. Life cycle : 1,000 Cycle(with load)
6. ROHS Compliant



**P.C.B DIMENSION**



Circuit Diagram

APPD.	CHKD.	D'SGD	MODEL NAME.	MINI SLIDE SWITCH		
K.I LEE	J.P ROH	J.S SIN	TITLE	BSI-10		
			DRAWG. NO.	Sheet No. 1 / 1	REV	A
			东莞市颖鑫电子科技有限公司			